



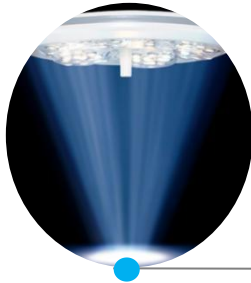
## LED Operating Light



*User-friendly and Best Value for Money*



Full-close streamline lamp body assures visual comfort and suitable for laminar flows.



Delivery up to 120,000 or 140,000 lux of pure, white bright light; Illumination depth reach 1000mm.



LCD touching screen control panel;  
Individual adjustment system for illumination intensity and color temperature.

LED Operating Light  
Premium Quality, Surprising Price



Focus field adjusted by clockwise or anti-clockwise the detached central handle.



Balanced system has more than 3 joints, can be rotated 540°, smooth movement and easy to fix position timing after long time use.

# LED Operating Light

## General Features

- ◇ Delivery up to 100,000 or 140,000 lux of pure, white light
- ◇ Consumes 1/3 the heat of previous LED technology
- ◇ Offer better tissue discrimination with a CRI up to 93
- ◇ Focus field adjusted by clockwise or anti-clockwise the central handle
- ◇ LCD touching screen control panel
- ◇ Superior deep-cavity illumination
- ◇ Excellent shadow control
- ◇ Flexible and stable balance arms suspension system for height and angle
- ◇ More than 50,000 hours effective life-time, extremely reduce the hospital's maintenance cost
- ◇ Good work lamps provided by a manufacturer with 18-year working experience

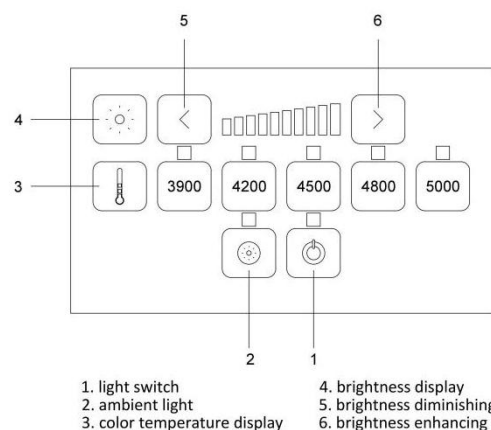
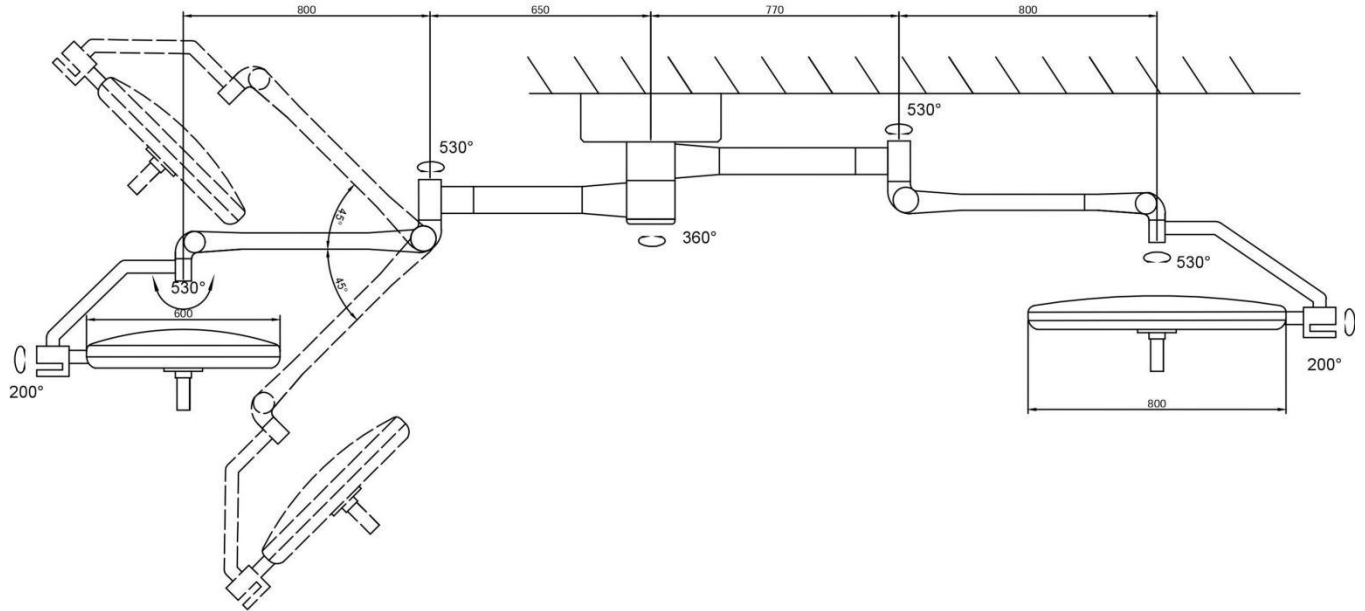


Diagram of control panel

## Technical Specifications

Model No.	WYLED5	WYLED3	WYLEDL3 Floor standing type
Illumination intensity	50,000-160,000Lux	50,000-160,000Lux	50,000-160,000Lux
Color temperature	3900, 4200, 4500, 4800, 5000	3900, 4200, 4500, 4800, 5000	3900, 4200, 4500, 4800, 5000
Color rendering index	85, 87, 89, 91, 93	85, 87, 89, 91, 93	85, 87, 89, 91, 93
Light field size	200±50mm	200±50mm	200±50mm
Illumination depth	10,00mm	10,00mm	10,00mm
Light source	Osram LED lighting	Osram LED lighting	Osram LED lighting
Qty of LEDs	48	33	33
Diameter of lamp head	800	600	600
Optional	HD video camera system	HD video camera system; low ceiling height design	HD video camera system; Emergency power supply system
Installation height	2.8-3.0 meters	2.8-3.0 meters	/

### Diagram of WYLED5/3 Surgical Light



All measurement are in millimeter.

### Pre-Installation Guideline

For Installations direct to a structural ceiling, please advise dimension of floor to underside of ceiling;

For installations with a suspended ceiling, please advise dimensions at Floor to underside of ceiling and suspended ceiling to structural ceiling.

